

# The Hi-line News



Serving Members of Breckinridge, Grayson, Hancock, Hardin, Meade and Ohio Counties

Meade County RECC

[www.mcrecc.coop](http://www.mcrecc.coop)

A Touchstone Energy® Cooperative 

## WELCOME CHANGE *Spring should bring lower energy usage*

By President/CEO Marty Littrel

“To everything there is a season.”

Whether you know that verse from the Bible or from The Byrds song in the 1960s, it is true in so many ways, including your energy usage.

As winter fades and spring begins, we gladly trade cold weather for warmer temperatures. This seasonal shift usually coincides with reduced home energy use and lower energy bills.

That’s certainly a welcome change after this past winter, in which Meade County RECC experienced on average a 30 percent increase in our residential members’ energy usage compared to the fall. The spike triggered a lot of chatter on social media and even in the news media.

It’s understandable if you thought this increase seemed drastic. Let me explain why. Our 5-year trend analysis shows the seasonal rise in home energy usage can vary year to year. In 2016, after a mild fall, December came in with a roar of colder than average temperatures for several days, resulting in a much larger disparity in residential energy usage from November to December.

Interestingly, our December 2016

residential energy usage was actually lower than December of 2011 and 2013.

Many myths circulate why energy usage spikes in the transition from fall to winter. The simple truth is that weather is the greatest contributor.

*Other factors include:*

- **As it gets dark earlier** during winter, homeowners keep lights operating for greater lengths of time.
- **Extreme temperatures** force residential heat ventilation and air conditioning (HVAC) systems to work harder, longer, and more often.
- **Holiday frenzy**—additional cooking, kids out of school, Christmas lights and parties, plus extra visitors during holiday season.
- **Not all homes are created equal.** For example, a smaller home doesn’t always mean less energy usage. Weatherization of the home, including insulation levels, efficient lighting (LEDs), ENERGY STAR appliances, programmable thermostats, and HVAC systems with higher SEER ratings make a big impact on energy savings.

We want you to save money on your energy bill. We offer many rebates to help you save energy dollars throughout the year.

- **HVAC tune-up (\$25)**
- **HVAC replacement (\$200-\$750)**
- **Refrigerator replacement (\$100)**
- **Washing machine replacement (\$100)**
- **Touchstone Energy New Home (\$750-\$2,000)**

I encourage you to check out our online ([www.mcrecc.com](http://www.mcrecc.com)) and mobile app resources that provide personal energy data, historical weather analysis, and tools to view your usage on a daily, weekly, and monthly basis.

Meade County Rural Electric Cooperative Corporation (Meade County RECC) is a not-for-profit, locally owned electric retail provider that is owned by the members it serves. We strive to keep the cost of electricity affordable and the reliability of service high for the members we serve in Breckinridge, Hancock, Hardin, Grayson, Meade, and Ohio counties.

Many myths circulate as to why energy usage spikes during the transition from fall to winter. The simple truth is that weather is the greatest contributor to increased energy use on a monthly basis.

# MYTH FACT

**MYTH** "MCRECC labor costs are the reason for higher electric rates..."



**TRUTH** Our annual labor costs are only a small percentage of our overall costs, typically averaging about 12 percent of our total expenses. Likewise, as a not-for-profit, locally owned electric cooperative, when cooperatives have a strong financial year, profits are either reinvested for infrastructure or distributed to members in the form of "capital credits," which are dividends paid on a member's investment in the cooperative.

In 2016, MCRECC paid out \$1.2 million in patronage capital to its member-owners, plus another \$5.8 million in credits to help offset members' electric bills.

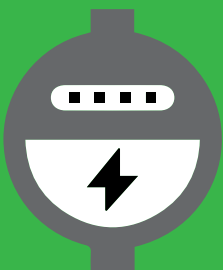
**MYTH** "MCRECC raises its electric rates during winter and summer months in order to pay off its shareholders or make excessive profits..."



**TRUTH** Meade County RECC is regulated by the Kentucky Public Service Commission (KPSC) which determines and sets the energy rates that it charges its members. Meade County RECC has not increased electric rates since 2013. The only fluctuation members would experience is the ebb & flow of the monthly bill credits.

If you receive electric service from Meade County RECC, that makes you a member-owner of this not-for-profit electric cooperative. Any net savings (profits) left after bills are paid are set aside for operations and improvements or returned to the co-op members in the form of credits.

**MYTH** "My meter must not be working correctly, there is no way I've used that much electricity..."



**TRUTH** Meters rarely malfunction and if they should, they typically slow down resulting in a loss of revenue for the electric cooperative. In accordance with regulations, we are obligated to test our meters on a periodic basis, plus the meter must remain accurate within a 2 percent variance.

2016 CREDITS & BENEFITS Meade County RECC  
2016 Bill Credits - \$5.8 million  
2016 Capital Credits - \$1.2 million  
2016 Energy Efficiency Incentives - \$250,000  
TOTAL MEMBER VALUE= \$7,250,000

**In order to familiarize you with certain sections of our Bylaws pertaining to the Annual Meeting of the Cooperative,  
we are printing on this page excerpts from the Bylaws concerning the Annual Meeting**

**ARTICLE I - MEMBERSHIP**

**Section 1.01. Eligibility.** Any natural person, firm, association, corporation, or body politic or political subdivision or agency thereof (each hereinafter referred to as "person," "applicant," or "member") shall be eligible to become a member of, and, at one or more premises owned or directly occupied or used by the member, to receive electric service from Meade County RECC (hereinafter called the "Cooperative"); however, no person shall hold more than one membership in the Cooperative.

**Section 1.02. Application for Membership.** Application for membership -- wherein the applicant shall agree to purchase electric power and energy from the Cooperative and be bound by and to comply with all provisions of the Cooperative's Articles of Incorporation, Bylaws, and all rules, rate schedules and regulations adopted by the Board of Directors pursuant thereto (the obligations embraced by such agreement being hereinafter called "membership obligations") -- shall be made in writing on such form as is provided therefore by the Cooperative. With respect to any particular classification of service for which the Board of Directors shall require it, such application shall be accompanied by a supplemental contract, executed by the applicant on such form as is provided therefore by the Cooperative. The membership application shall be accompanied by any security deposit, service connection deposit or fee, inspection fee, facility extension fee or contribution in aid of construction (hereinafter referred to as other deposits or fees) that may be required by the Cooperative. Deposits or fees shall be refunded in the event the application is denied by the Board.

**Section 1.03. Acceptance Into Membership.** Upon complying with the requirements set forth in Section 1.02, any applicant shall automatically become a member on the date of the connection for electric service; PROVIDED, that the Board of Directors may by resolution deny an application and refuse to extend service upon its determination that the applicant is not willing or is not able to satisfy and abide by the Cooperative's terms and conditions of membership or that such application should be denied for other good cause; PROVIDED FURTHER, that any person whose application, for sixty (60) days or longer, has been submitted but not denied by the Board of Directors and who has not been connected by the Cooperative for electric service may, by filing written request therefore with the Cooperative at least thirty (30) days prior to the next meeting of the Board of Directors, have the application submitted to and approved or disapproved by the vote of the Directors at such meeting.

**Section 1.04. Joint Membership.** A husband and wife may apply for a joint membership. The words "member," "applicants," and "persons" as used in these bylaws shall include a husband and wife applying for or holding a joint membership, unless clearly distinguished in the text; and all provisions relating to the rights, powers, terms, conditions, obligations, responsibilities and liabilities of membership shall apply equally, severally and jointly to them. Without limiting the generality of the foregoing --

- (a) the presence at a meeting of either or both shall constitute the presence of one member and a joint waiver of notice of the meeting; and a revocation of any proxy vote executed or mailed by either or both;
- (b) the vote of either or both shall constitute, respectively, one joint vote: PROVIDED, that if both be present but in disagreement on such vote, each shall cast only one-half (1/2) vote;
- (c) notice to, or waiver of notice signed by, either or both shall constitute, respectively, a joint notice or waiver of notice;
- (d) suspension or termination in any manner of either shall constitute, respectively, suspension or termination of the joint membership;
- (e) each, but not both concurrently, shall be eligible to serve as a director of the Cooperative, but only if both meet the qualifications required therefore; and
- (f) neither will be permitted to have any additional service connections except through their one joint membership.

**ARTICLE III- MEETINGS OF MEMBERS**

**Section 3.01. Annual Meetings.** The annual meeting of the members shall be held each year, at such place in one of the counties in Kentucky within which the Cooperative serves, and beginning at such time, as the Board of Directors shall from year to year fix. It shall be the responsibility of the Board of Directors to make adequate plans and preparations for, the annual meeting and any special meeting. Failure to hold the annual meeting at the designated time and place shall not work a forfeiture or dissolution of the Cooperative.

**Section 3.05. Voting.** Each member shall be entitled to only one vote upon each matter submitted to a vote at any meeting of the members. Voting by members other than members who are natural persons shall be allowed upon the presentation to the Cooperative, prior to or upon registration at each member meeting, of satisfactory evidence entitling the person presenting the same to vote. At all meetings of the members, all questions shall be decided by a majority of the members voting thereon, except as otherwise provided by law or by the Cooperative's Articles of Incorporation or these Bylaws. Members may not cumulate their votes in person or by proxy or mail.

**Section 3.06. Agenda.** No proposal shall be voted upon at the Annual meeting unless it has been placed on the agenda at least forty (40) days prior to such meeting. Any legitimate proposal may be placed on the agenda by any member by filing a copy of the proposal with the Secretary within the time allowed, with a request that it be submitted to the Annual Meeting for consideration. Such legitimacy subject to rule by the Board of Directors.

**ARTICLE IV- DIRECTORS**

**Section 4.01. General Powers.** The business and affairs of the Cooperative shall be managed by a Board of seven (7) directors. The Board shall exercise all of the powers of the Cooperative except such as are by law or by the Cooperative's Articles of Incorporation or Bylaws conferred upon or reserved to the members.

**Section 4.02. Qualifications.** No person shall be eligible to become or remain a director of the Cooperative who is a close relative of an incumbent director, or an employee, or employee's spouse (employee is defined as a current employee or former employee) of the Cooperative, or is not a member in good standing of the Cooperative. No person shall be eligible to become or remain a director of, or to hold any other position of trust in, the Cooperative who is not of legal capacity age or who is in any way employed by or financially interested in the Cooperative or a competing energy supplier, or a business selling electric energy or supplies to the Cooperative, or a business primarily engaged in selling electrical appliances, fixtures or supplies to, among others, the members of the Cooperative, or any candidate or elected official for any local, state, or national office. Notwithstanding any of the foregoing provisions of this Section dealing with close relative relationships, no incumbent director shall lose eligibility to remain a director or to be re-elected as a director if such director becomes a close relative or another incumbent director or of a Cooperative employee (including a retired employee) because of a marriage to which such director was not a party. Upon establishment of the fact that a nominee for director lacks eligibility under this Section or as may be provided elsewhere in these Bylaws, it shall be the duty of the chairman presiding at the meeting at which such nominee would otherwise be voted upon to disqualify such nominee. Upon the establishment of the fact that any person being considered for, or already holding, a directorship or other position of trust in the Cooperative lacks eligibility under this Section, it shall be the duty of the Board of Directors to withhold such position from such person, or to cause such person to be removed therefrom, as the case may be. Nothing contained in this Section shall, or shall be construed to, affect in any manner whatsoever the validity of any action taken at any meeting of the Board of Directors, unless such action is taken with respect to a matter which is affected by the provisions of this Section and in which one or more of the directors have an interest adverse to that of the Cooperative.

**Section 4.03. Voting for Directors and Tenure.** The representation of directors shall be geographically divided, and according to membership within the service area in accordance with a map in which county boundaries are not considered, and there shall be districts 1, 2, 3, 4, 5, 6, & 7, and the director shall represent the area from which said director is selected, and any qualified member from the area may be eligible to become a director. Director elections shall be rotated among the districts and they shall be chosen by vote of the membership. The person receiving the highest number of votes, shall be elected as director from the area, subject to other provisions of these bylaws.

Tenure for a full term on the Board of Directors shall be three (3) years. When the election of directors cannot be held at the regular annual meeting of the members due to a quorum not being present, the directors then serving as directors of the Cooperative shall continue to serve as directors of the Cooperative representing their respective district for the incoming term of three (3) years. All directors shall serve until their successors shall have been elected and shall have qualified, subject to the provisions of these bylaws with respect to the directors.

**Section 4.05. Nominations.**

(a) It shall be the duty of the Board of Directors to appoint, not less than forty-five (45) days nor more than ninety (90) days prior to the Annual Meeting of the members, a Committee on Nominations consisting of not less than five (5) nor more than eleven (11) members who shall be selected from different districts of the service area. No officer, employee or member of the Board of Directors of the Cooperative shall be appointed a member on the Committee of Nominations.

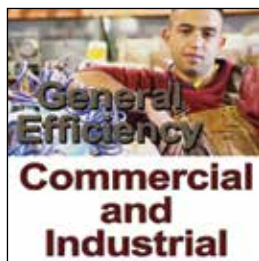
(b) It shall be the responsibility of the Committee on Nominations to select a candidate to run for office of Director for each district to fill the vacancy caused by the expiration of a Director's term. The Committee on Nominations shall prepare and post its nominations in a conspicuous manner in the lobby of the Cooperative Headquarters building in Brandenburg not later than 4:30 p.m. of the fortieth (40th) day prior to the date set for the Annual Meeting, at which election the Director(s) shall be announced.

(c) Any one hundred (100) or more qualified members of any district may, by written or printed petition, make other nominations from the membership of their district for the office of Director, by affixing their signatures and addresses to the petition. In no event shall a member sign a petition for more than one (1) candidate. In the event a member signs a petition for more than one (1) candidate, then his signature shall be invalid on all petitions signed by him.


(d) Petition or petitions by qualified members nominating candidates for the Office of Director shall be filed at the Headquarters Office of the Cooperative during regular office hours of the Cooperative, on or before the thirtieth (30th) day prior to the date set for the Annual Meeting and said nominating petitions shall be posted by the Secretary in a conspicuous manner in the lobby of the Cooperative/Headquarters not less than fifteen (15) days prior to the date set for the Annual Meeting if, after examination by the Provost, it is determined by said Provost that said petition or petitions meet the requirements of the Bylaws, Articles of Incorporation and the laws of the Commonwealth of Kentucky. A date of ninety (90) days prior to the Annual Meeting shall be established in determining whether a member is in good standing and qualified for the purposes of signing nominating petitions and/or voting in the election of Directors.

# Smart Savings

## Rebate Program



Meade County RECC

A Touchstone Energy® Cooperative 

**For more information regarding these programs check out our Web site at [www.mcrecc.coop](http://www.mcrecc.coop)**

## MEADE COUNTY RECC OFFICES

### MONDAY-FRIDAY

Brandenburg  
1351 Hwy. 79, P.O. Box 489,  
Brandenburg, KY 40108  
7:30 a.m. (EDT)-4:30 p.m. (EDT)  
(270) 422-2162

### MONDAY-FRIDAY

Hardinsburg  
133 Old Highway 60, Hardinsburg, KY 40143  
7:30 a.m. (EDT)-4:30 p.m. (EDT)  
(270) 756-5172

**Toll-free 1-877-276-5353**

Questions regarding your account?  
Please have your account number or meter number  
when you call or visit the cooperative offices.

### BOARD OF DIRECTORS

**Chairman Robert Rhodes** (District 5)  
**Vice Chairman Dr. James Sills** (District 4)  
**Secretary-Treasurer Darla Sipes**  
(District 3)  
**Stephen Barr** (District 1)  
**David Wilson II** (District 2)  
**Christopher Creech** (District 6)  
**Paul Ed Butler** (District 7)

**ATTORNEY**  
**Thomas Brite**

**PRESIDENT/CEO**  
**Marty Littrel**

## DAYLIGHT SAVING TIME

Don't forget to spring forward on **March 12!**  
Set your clocks ahead by one hour.

